

Vaporin | Sub-Ohm Series

# MAMBA

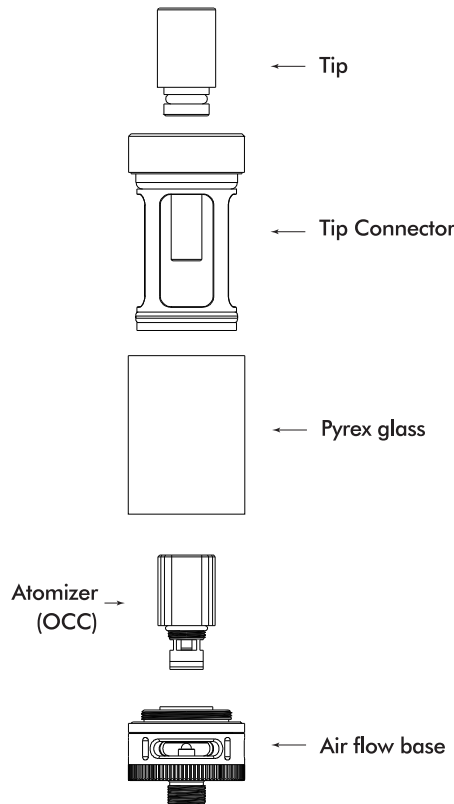
## User Manual

Thank you for purchasing the Vaporin Sub-Ohm Series Mamba. With complete control over every puff, the Mamba is designed and engineered to perfect the way you vape.

We appreciate your business. If you have any questions about your Vaporin product, or comments about your experience with it, please contact us and let us know.

Sincerely,

*The Vaporin Team*



### Filling E-juice

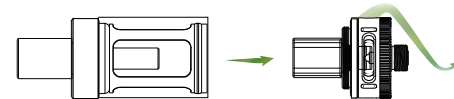
The atomizer unit is completely replaceable and designed for a period of life span. When flavor and/or vapor are reduced, it is time to change the atomizer. To replace the atomizer, remove the tank from the battery and turn the tank upside down, unscrew the air flow base and carefully set the tank aside. Unscrew the atomizer unit counterclockwise. Once disassemble, discard the used head and replace it with a new clean OCC head. Screw the new head clockwise into the air flow base. Fill the E-juice into the tanks, make sure the E-juice level below the middle stem and ensure no E-juice split into it. Screw the air-flow base in clockwise back to the tank.

### Adjusting the air flow:

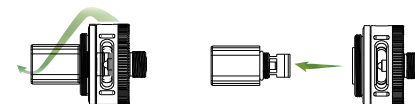
1. Twist the dial to the preferred setting.
2. Smaller opening, less vapor.
3. Larger opening, more vapor

### How to change the coil head on a Mamba Atomizer:

Step 1: Unscrew the Mamba Box Mod tube from bottom base.



Step 2: Unscrew the old coil head from the top of the base assembly.

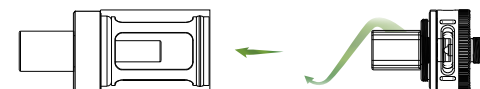


Step 3: Screw the new coil head into the bottom base again;



\* Tip: A loose coil head can cause leaking.

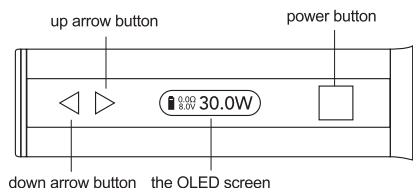
Step 4: Screw the Mamba Box Mod tube back into the bottom base.



## How to use

To Power on the Vaporizer, simply press the power button 5 times fast to power the element on.

Make sure your mouth is over the mouth piece, hold the power button down up to 5 seconds to activate the heating element. Inhale lightly.



**Switch the VV/VW mode:** Press the square button for three times to switch the VV/VW mode when the battery is turned on. In VV mode, you can adjust output voltage between 2.0V-8.0V. In VW mode, you can adjust output wattage between 5W-30W.

**Adjust the voltage/wattage:** Press the up-and-down arrow buttons to increase or decrease the voltage/wattage. Keep pressing the up/down arrow button, voltage/wattage will increase or decrease slowly at first, then they will increase/decrease at a constant high speed. The number will stop increasing/decreasing when you loosen the up/down arrow button.

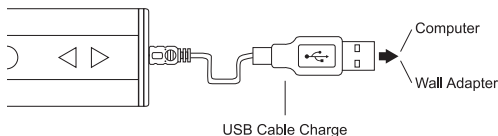
**Button lock functionality:** Keep pressing up-arrow button and down-arrow button simultaneously for 2 seconds when the battery is on, then they will be locked and the screen will reflect "Lock". Still keep pressing simultaneously for 2 seconds to unlock them and the screen will reflect "Unlock". Through these operations, you can protect the buttons from unintentional presses and prolong their service life.

**Switch the display mode:** Keep pressing up-arrow button and down-arrow button simultaneously for 2 seconds when the battery is off, the screen display will rotate 180 degrees. You can view the screen from two kinds of angle through this operation.

## How to charge

Mamba 30W is charged through USB port at the bottom of battery. It will take 2.5 hours to fully charge the battery. The battery level indicator on the OLED screen will keep

flashing during charging. When fully charged, the indicator will stop flashing and keep shining for 15 seconds then go out.



## Properties of Mamba 30 watt.

**Over 10s Protection:** If you keep pressing the button for over 10 seconds, the output will shut off and the OLED screen will reflect "Over 10s".

**Atomizer Short-circuit Protection:** When atomizer short-circuit occurs, the OLED screen will reflect "Atomizer Short".

**Low-voltage Protection:** When the voltage of battery is below 3.3V, the OLED screen will reflect "Lock".

**Unlock the Low-voltage Protection:** When the voltage of battery is above 3.7V, the low-voltage protection will be unlocked.

**Low power Alert:** If the power of battery is lower than 10%, the power symbol on the screen will flash.

- High-safety, high-capacity, high-magnification and high-stability lithium battery.
- On the bottom of battery, there is a laser marker named "CE".

## Precautions

- Do not leave the Mamba in high temperatures or damp conditions, otherwise it may be damaged. The appropriate operation temperature is within 0°C to 45°C while charging and -10°C to 60°C while using.
- Do not attempt to combine the Mamba with parts from other brands of e-cigarettes. If it is damaged in this way, our company will not take on responsibility and your warranty will be void.

## Please Note

• Persons under 18 years of age are not permitted to purchase or use **Vaporin Electronic vaporizers**. Non-smokers, children, pregnant women, women who may become pregnant, women breastfeeding or persons with or at risk of heart disease, hypertension, high blood pressure, diabetes, or taking medicine for depression or asthma should not use this product. Nicotine is known to cause sudden and severe increases in heart rate and blood pressure and may be dangerous to your health.

• **Vaporin** is intended for current smokers over the age of 18 who wish to use **Vaporin** as an alternative to traditional smoking, without the tar, ash and smell found in traditional vaporizers.

• You should consult your physician before using **Vaporin Electronic Vaporizer** because they may or may not contain nicotine.

• If you are smoking tobacco products you are encouraged to stop.

• When not smoking **Vaporin**, you should always keep it stored in their original box. If the vaporizer is exposed to wind or loud noises, this may cause to activate continually and overheat.

• Please keep out of reach of children and pets. Some parts of **Vaporin** may be a choking hazard. If ingested, please consult your doctor or vet immediately.

## Vaporin Limited Warranty

Vaporin, LLC warrants, for a period of 90 days, from the original purchase date, that the electronic vaporizer, charger and batteries included are free from material defects and workmanship. If material is found to be defective, the sole liability from Vaporin is to repair or replace with a factory recertified product.

If there is dissatisfaction or damage arising from use of our product, you agree the only recourse and maximum liability may be repair or replacement of your product. This warranty is provided in lieu of all express or implied warranties including merchantability and fitness warranties unless these warranties are required by law. If such warranties are required they will apply only during the warranty period. For more information visit [www.vaporin.com](http://www.vaporin.com).

The warranty does not apply to other parts or if the product is used with non Vaporin certified or approved product, used for commercial purposes, damaged by wear and tear, acts of God, misuse, abuse, negligence, accident, modified or tampered with, or any other cause other than defective material or workmanship.

## Customer Care

For service or help please call **Vaporin** customer care at 1-800-974-2950 or visit our website, [www.Vaporin.com](http://www.Vaporin.com)

### California Proposition 65

Warning: This product contains nicotine, a chemical known to the state of California to cause birth defects or other reproductive harm.

\*results may vary depending on usage.

## Follow Us



<http://www.facebook.com/Vaporin>



<https://twitter.com/vaporin>